

16 Compartment Bins

Part Number 2011493

Features:

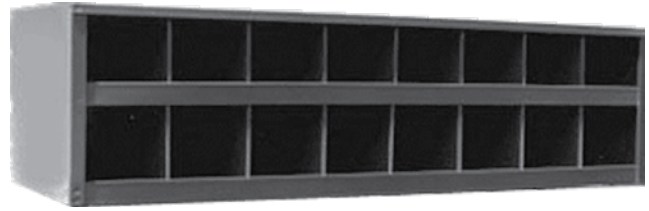
Heavy Duty Cold-Rolled Steel Construction
Durable Baked Gray Enamel Finish

Shipping Weight: 24 lbs.

Exterior Dimensions: 9 1/2" H x 35 1/4" W x 11 7/8" D

Opening Dimensions: 4 5/8" x 4 3/4" W

Bin has a hemmed divider with a 1" lip providing a convenient location of labels and keeping parts securely in place.



20 Compartment Bins

Part number 2011494

Shipping Weight: 68 lbs

Exterior Dimensions:

42" H x 35 1/4" W x 11 7/8" D

Opening dimensions:

6 1/4" x 8 1/2"

Bin has a hemmed divider and a 1"-2" lip, providing a convenient location of labels and keeping parts securely in place. Heavy-duty cold rolled steel construction and durable baked gray enamel finish.



24 Compartment Bins

Part number 2011495

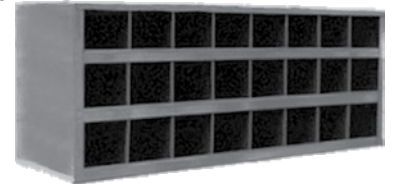
Shipping Weight: 35 lbs.

Exterior Dimensions: 14 1/4" H x 35 1/4" W x 11 7/8" D

Opening Dimensions:

3 1/4" H x 4 1/8" W

Bin has a hemmed divider with a 1" lip providing a convenient location of labels and keeping parts securely in place. Heavy-duty cold rolled steel construction and durable baked gray enamel finish.



36 Compartment Bins

Part number 2011496

Shipping Weight: 46 lbs.

Exterior Dimensions:

42" H x 17 5/8" W x 11 7/8" D

Opening Dimensions:

4 5/8" H x 4" W

Bin has a hemmed divider with a 1" lip providing a convenient location of labels and keeping parts securely in place. Heavy-duty cold rolled steel construction and durable baked gray enamel finish.



40 Compartment Bins

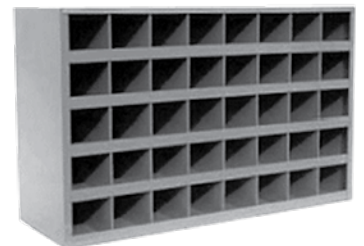
Part number 2009253

Shipping Weight: 54 lbs

Exterior Dimensions: 21 1/2" H x 35 1/4" W x 11 7/8" D

Opening Dimensions: 4" H x 4" W

This is one of our more popular models. Two units can be stacked to form an 80 compartment unit. Shipped one per carton.



Bin has a hemmed divider with a 1" lip providing a convenient location of labels and keeping parts securely in place. Heavy-duty cold rolled steel construction and durable baked gray enamel finish.

Reference numbers and part weights are provided as a reference only.
Actual part weight may vary from weights shown.

1-888-232-1010
fax: (563) 441-6760

www.TrinityHardwareHQ.com
sales@TrinityHardwareHQ.com



TRINITY™
SUPPLY CHAIN SOLUTIONS 507
20100706/issue 3/rev. a

42 Compartment Bins

Part number 2011497

Shipping Weight: 81 lbs.

Exterior Dimensions:

42" H x 35 1/4" W x 11 7/8" D

Opening Dimensions:

6" H x 5 5/8" W

Bin has a hemmed divider with a 1" lip providing a convenient location of labels and keeping parts securely in place. Heavy-duty cold-rolled steel construction and durable baked gray enamel finish.



56 Compartment Bins

Part number 2011498

Shipping Weight: 85 lbs.

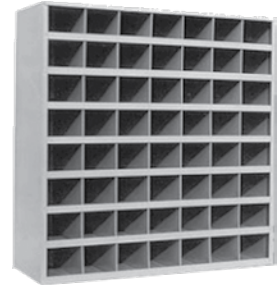
Exterior Dimensions:

42" H x 35 1/4" W x 11 7/8" D

Opening Dimensions:

4" x 4 1/2"

Bin has a hemmed divider with a 1" lip providing a convenient location of labels and keeping parts securely in place. Heavy-duty cold rolled steel construction and durable baked gray enamel finish.



72 Compartment Bins

Part number 2009254

Shipping Weight: 90 lbs.

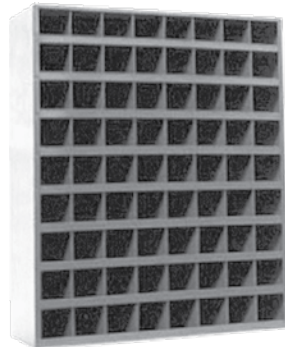
Exterior Dimensions:

42" H x 35 1/4" W x 11 7/8" D

Opening Dimensions:

3 5/8" H x 4" W

Bin has a hemmed divider with a 1" lip providing a convenient location of labels and keeping parts securely in place. Heavy-duty cold-rolled steel construction and durable baked gray enamel finish.



10 Compartment Rod Racks

Part number 2011499

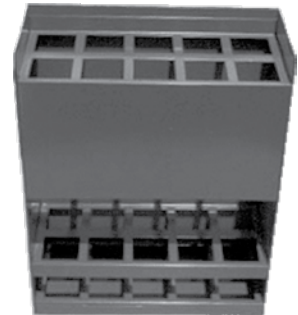
Shipping Weight: 17 lbs.

Exterior Dimensions:

24" H x 19 1/8" W x 8 1/8" D

Used to organize threaded rod. Equipped with ten (10) 3" square holes.

Rack is constructed with a heavy duty cold-rolled steel with a durable baked gray enamel finish. With a ten (10) hole capacity.



Base for 40 & 72 Compartment Bins

Part number 2017089

Shipping Weight: 13 lbs.

Exterior Dimensions: 33 3/4" x 12 1/4" x 5 3/4"

Base for 12" deep parts bins P8622-040 40 compartment bin and P8622-002 72 compartment bin.



6 Drawer Cube Units

Cube units are made of metal and consists of one cube and six matching pans. Cubes are modular and can be stacked.

Part numbers

Size: 12" W x 15" H x 15 3/4" L

Red- 2016605
Blue- 2016606
Gray- 2016607
Tan- 2016608
Yellow- 2017326
Green- 2016610
Black- 2016611
Orange- 2016609



Reference numbers and part weights are provided as a reference only. Actual part weight may vary from weights shown.

Rack for Large Tray Assortment



Part number 2009603
Shipping Weight: 37 lbs.

Exterior Dimensions:
14 3/4" H x 20 1/4" W x 12 3/4" D

This unit has four slide out trays and will help maximize storage space. The unit features a telescopic slide trays. Prime cold rolled steel with interlocking and welded construction with a durable gray powder coat finish.

Empty Drawers for Large Tray Assortments



Pictured: 20 compartment tray

Shipping Weight: 8 lbs.

Prime, cold rolled steel, interlocking, and welded construction. Durable gray powder coat finish.
Tray dimensions are:
13 3/8 W x 9 1/4" D x 2" H.

Configuration	Part No.
6 compartments	2017087
4 columns (with adj. dividers)	2009604
20 compartments	2009605
24 compartments	2009606

Base for Large Tray Assortment Rack



Part number 2017088
Shipping Weight: 15 lbs.

Exterior Dimensions:
14 3/4" H x 20 1/4" W x 12 3/4" D

Rack base is available for use with rack, part number 2009603. Prime cold rolled steel with interlocking and welded construction in a durable gray powder coat finish.

Reference numbers and part weights are provided as a reference only. Actual part weight may vary from weights shown.

1-888-232-1010
fax: (563) 441-6760

www.TrinityHardwareHQ.com
sales@TrinityHardwareHQ.com

